



National Award for
Outstanding Entrepreneurship - 2010



National Award for
Quality Products - 2002

Vaiseshika[®]
Where Quality and Standards Meet

PCB INSPECTION MICROSCOPE : 7004 PCB



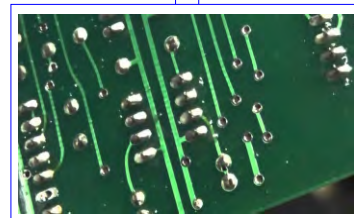
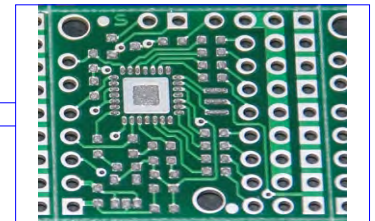
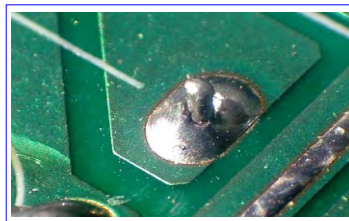
DESCRIPTION :

‘Vaiseshika’ PCB Inspection Microscope is an advanced system used for easy **Visual Inspection & Quality Control of Printed Circuit Board**. The microscope offers full stereoscopic view with continuously variable zoom effect. Sturdy and stable base serves dual purpose of microscope base and specimen stage.

Vaiseshika PCB Inspection Microscope offers reliable inspection & measurement of different connects & clearances that are vital during & after production. The Microscope has dual observation, LCD view as well as through binocular eyepiece.

Vaiseshika PCB Inspection Microscope facilitates the critical working on Protoboard and Stripboard having modern tiny surface mount component which are very small to work with naked eye

We offer to have a clear view of pins separated by 0.4 mm or less, component marking just as small and marked by flux deposits make hard to view any detail until the board is immaculate



IMAGES CAPTURED ON 7004 PCB

PCB INSPECTION MICROSCOPE : 7004 PCB

GENERAL SPECIFICATION:		
Microscope Base/Stand	Universal Stand without/with Illumination	
Optical Magnification	7X- 45X or 7X - 63X continuously variable with standard EP & Zoom Objective	
Digital Magnification	3X to 72X @ 7" LCD 5.25X to 135X @ 10" LCD 12X to 304X @ 21" LCD	
Zoom Objective	0.7X to 4.5X or 7X to 6.3X continuously variable	
Zoom Ratio	6.5:1 or 9:1	
Standard Eyepiece & Display	High Eye Point Wide Field 10X / Ø 23 & 7" LCD Display	
Optical Magnification	3.5X to 270X with optional Eyepiece & Objectives	
Optional Eyepieces	WF Eye Piece Pair 15X, 20X & 30X and Micrometer WF Eye Piece Pair 10X, Least count: 0.1mm	
Optional LCD Screen	10" & 21" LCD	
Optional Objectives	Auxiliary Objective 0.37/0.5X, 0.75X, 1.5X & 2.0X attachable below main objective	
Viewing Head (Inclined at 45°)	Trinocular (three parts, two for visual observation & one for LCD attachment)	
Rotation of Head	0 to 360°. The binocular vision is convenient to observer and eliminates fatigue of eyes.	
Interpupillary Distance	Adjustable according to your eyes from 52mm to 76mm	
Diopter Adjustment	± 6	
Light Distribution	50:50 between camera pot & observation head	
Color Filter	Blue & Green etc (optional)	
Focusing	Coarse focusing with pillar clamp. Fine focusing with sensitive rack & pinion motion through large knobs on both sides. Fine focusing range 50 mm approximately.	
Working distance	118 mm with standard objective.	
Illuminator (Optional)	Base Illuminator	Transmitted Day Light Illumination
	Outer Illuminator	Co-axial Led Ring Illumination
X-Y Stage (Optional)	Size: 150X150mm, Travel: 25X25mm, Least Count: 0.005mm.	

FEATURES / HIGHLIGHTS :

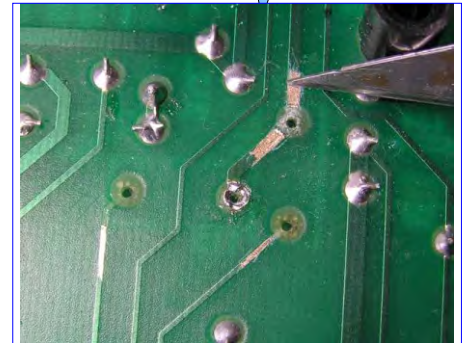
- Eyepiece less stereo inspection ideal for inspection of surface mount devices & marking on electronic components.
- Superb image resolution & ergonomics allow significantly reduced fatigue & improved fault detection.
- Fluorescent / LED Ring Light for daylight illumination of target object
- Continuous zoom effect
- 3.5X to 270X Optical Magnification
- Reliable inspection & measurement of different connects & clearances that are vital during & after production.
- Extra Long Working Distance for ease in soldering
- Eye diopters adjustment of the viewer
- Modular design allows addition of accessories & full interface with PC through CMOS/CCD/HDMI Camera.

PCB INSPECTION MICROSCOPE : 7004 PCB

ADVANTAGES

- Ensuring Zero defect manufacturing in FAI (First Article Inspection)
- Solder paste inspection on SMD
- Reasonable depth of field
- Improved fault detection
- Advanced ergonomics improves quality and increased output by reducing operator stress and fatigue.
- Digital display facility removes the need for restrictive eyepieces

Ample working distance for quality working



DUAL DISPLAY BENEFITS



BINOCULAR

Binocular Head having **two tubes** for vision through both eyes.



DIGITAL VIEW

Digital View on LCD display offers eyepiece less view of the same object which is seen through binoculars



National Award for
Outstanding Entrepreneurship - 2010



National Award for
Quality Products - 2002

Vaiseshika®

Where Quality and Standards Meet

RING ILLUMINATORS : SERIES 360



FLUORESCENT CIRCULAR
RING ILLUMINATOR : 360FL



LED CIRCULAR
RING ILLUMINATOR : 360LED



FIBRE OPTIC HALOGEN RING/COXIAL
ILLUMINATOR : 360HL/360HLC



FIBRE OPTIC LED RING/COXIAL
ILLUMINATOR : 360 LED-FO/360 LED-FOC

DESCRIPTION:

Vaiseshika offers a range of **Ring Illuminators**, with main microscope, to facilitate sharp and clear inspection & observation of specimen. These systems are laboratory and industrial grade Illumination systems. These systems provide bright, flicker-free illumination for a variety of application needs including assembly, inspection, imaging and machine vision. These circular Illuminators provide 360° of uniform, shadow-free and glare-free illumination on the specimen. The cool illumination of these systems minimizes eye fatigue in observation of applications that require intricate differentiation of colors and details, for prolonged periods of time and does not radiate heat to the illuminated area.

These systems are compact, quiet and portable. These are suitable for higher magnification (120x plus). Major advantage of ring illuminator is that it provides illumination similar to **Coaxial illumination** which provides shadow free illuminated field, at relatively low cost.

SPECIFICATION:

Specification	Model	360FL	360LED	360HL/360HLC	360 LED-FO/360 LED-FOC
Illumination		Daylight (Fluorescent)	Daylight (LED)	Yellow (Halogen)	Daylight (LED)
Bundle Dia Meter		-----	-----	Ø 5mm or as per customer	Ø 5mm or as per customer
Outer Diameter		Ø98mm	Ø98mm	Ø 82 or as per customer	Ø 82 or as per customer
Inner Diameter		Ø61mm	Ø61mm	Ø 62 or as per customer	Ø 62 or as per customer
Power		8W	4.5W	150W	20W
Input Voltage		220 Volts AC/ 50HZ	220 Volts AC/ 50HZ	220 Volts AC/ 50HZ	220 Volts AC/ 50HZ
Output Voltage		-----	DC12V	21V	-----
Brightness adjust		-----	0-100%	50-100%	0-100%
Working Distance		50-250mm	50-250mm	50-250mm	50-250mm
Quantity of LED/Bulb		-----	64 nos.-144 nos. (LED)	01(Halogen Bulb)	-----
Brightness		16000-20000Lux at ht. 100mm	16000-20000Lux at ht. 100mm	Above 1 Lac Lux	Above 1 Lac Lux
Color of Light		6400K	6400K	-----	6400K
Spare Tube		Optional	-----	Optional	-----